

Outer Dowsing Offshore Wind

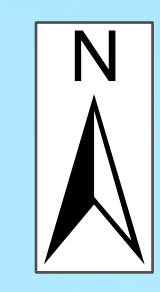
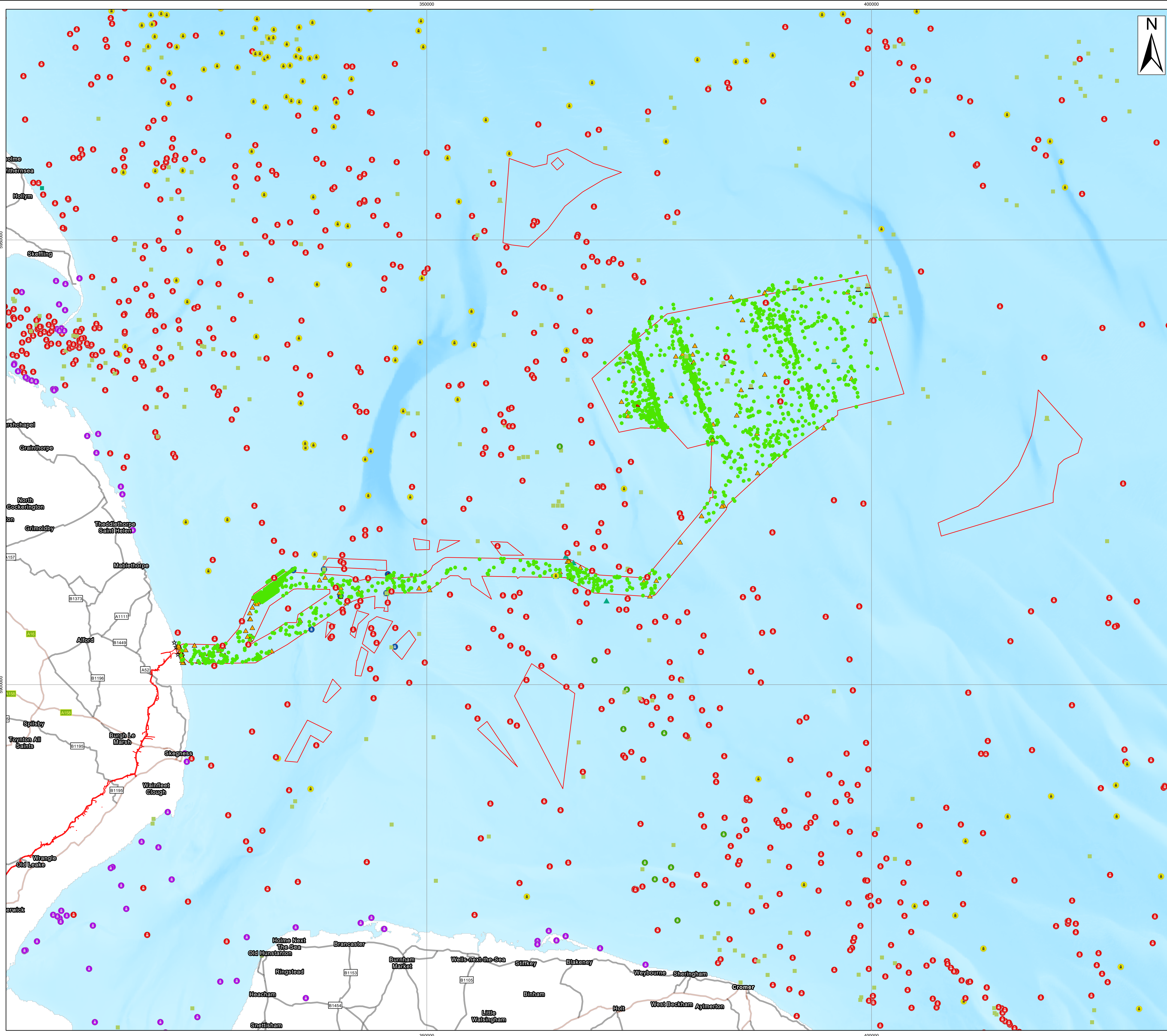
Plans

2.14 Historic Environment Plan Offshore

Date: March 2024

Document Reference: 2.14
Pursuant to APFP Regulation: 5(2)(m)
Rev: 1.0

| | | | | | | |
|--|---|---|--------------------|-------------------------|--------------------|--------------------|
| Company: | Outer Dowsing Offshore Wind | Asset: | Whole Asset | | | |
| Project: | Whole Wind Farm | Sub Project/Package: | Whole Asset | | | |
| Document Title or Description: | 2.14 Historic Environment Plan Offshore | | | | | |
| Internal Document Number: | PP1-ODOW-DEV-CS-PLN-0024 | 3 rd Party Doc No (If applicable): | N/A | | | |
| Outer Dowsing Offshore Wind accepts no liability for the accuracy or completeness of the information in this document nor for any loss or damage arising from the use of such information. | | | | | | |
| Rev No. | Date | Status / Reason for Issue | Author | Checked by | Reviewed by | Approved by |
| 1.0 | March 2024 | DCO Application | Dalcour Maclaren | Shepherd and Wedderburn | Outer Dowsing | Outer Dowsing |

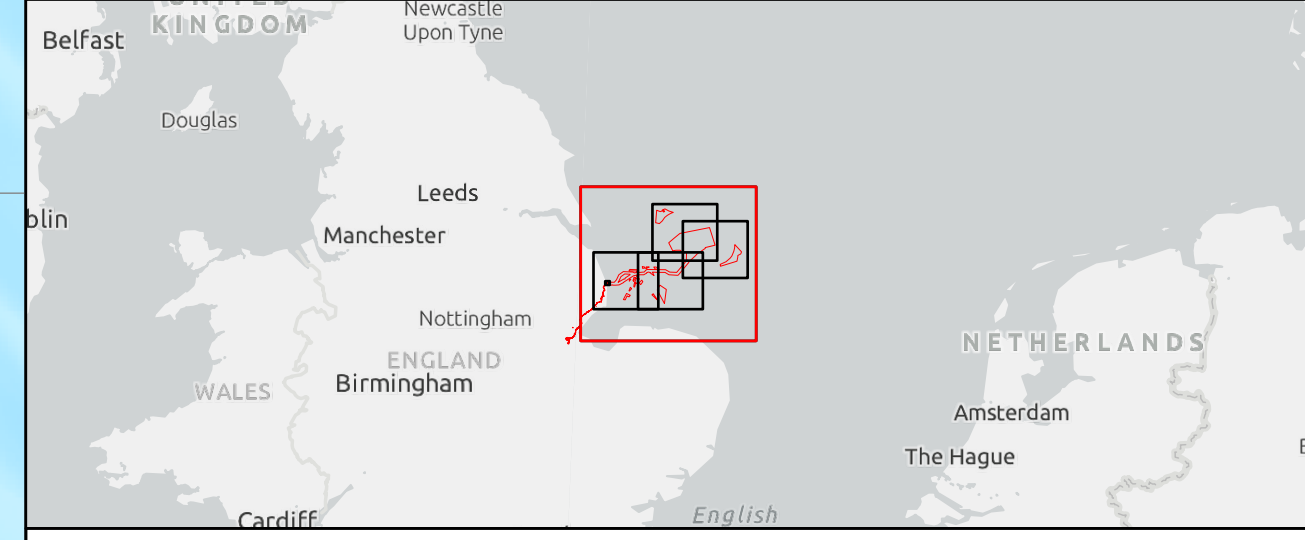


- Legend**
- Order Limits
 - Wrecks & Obstructions (UKHO)**
 - Dangerous wreck
 - Non-dangerous wreck
 - Distributed remains of wreck
 - Wreck showing any portion of hull or superstructure
 - Other obstruction
 - Foul area/ground
 - Archaeological Anomalies - Magnetometer**
 - ▲ High Potential
 - ▲ Medium Potential
 - Low Potential
 - MA AEZ**
 - Wreck
 - ▲ Obstruction
 - ▲ Foul
 - ★ Find

Source:
 Contains Esri UK, Esri, TomTom, Garmin, FAO, NOAA, USGS, Esri UK, Esri, TomTom, Garmin, Foursquare, METI/NASA, USGS.
 Contains OS data @ Crown Copyright and database right 2022. All rights reserved.

| | |
|--------|------------------------------|
| Notes: | Status: Application issue |
|--------|------------------------------|

Offshore Coordinate System
 Datum: WGS 1984
 Spheroid: WGS 1984
 Projection: UTM Zone 31N
 Central Meridian: 3 E
 Vertical Reference: LAT (Lowest Astronomical Tide)



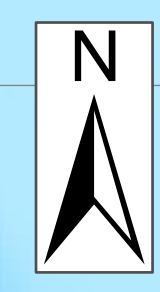
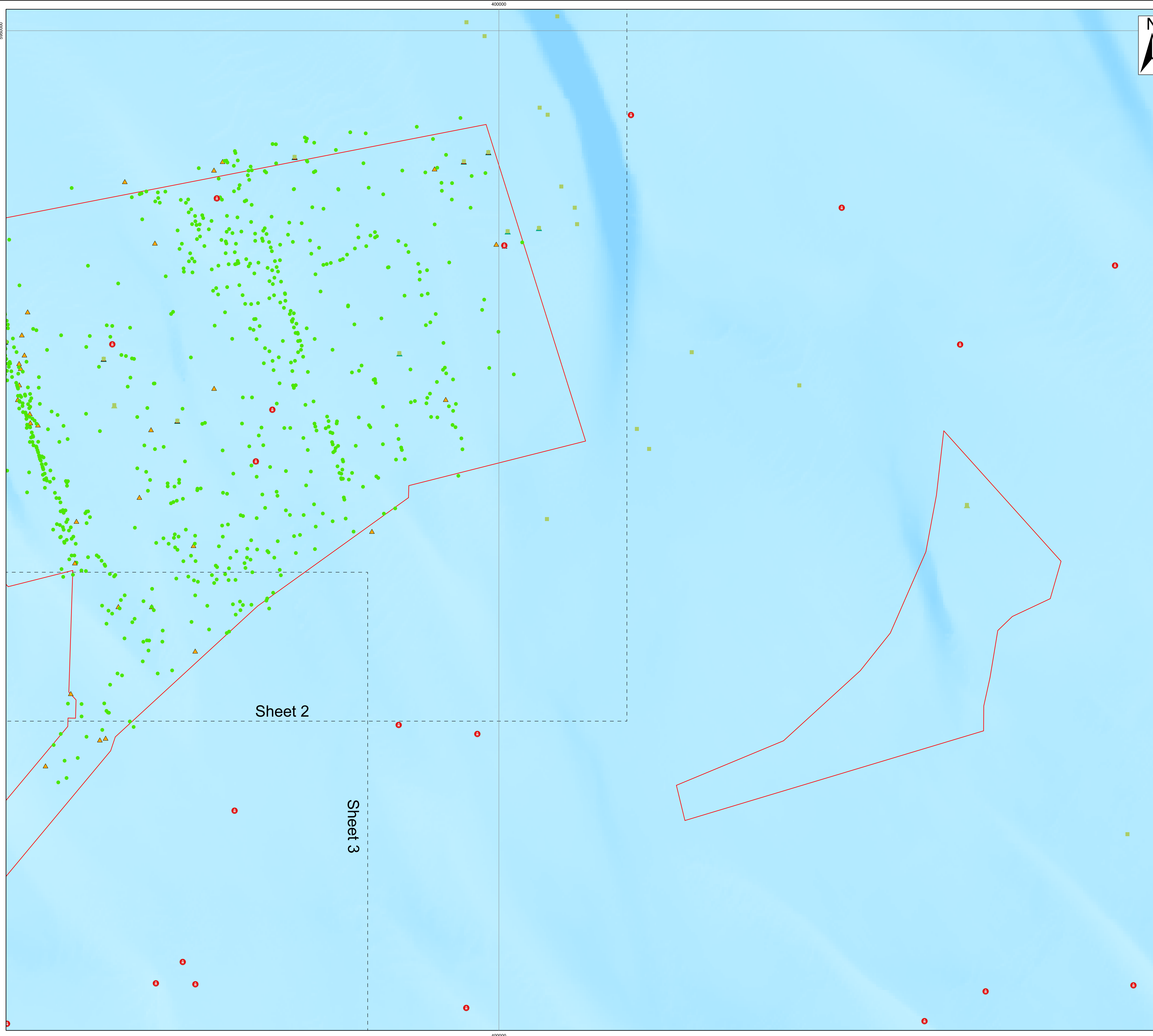
Outer Dowsing Offshore Wind 2.14 - Historic Environment Plan Offshore DCO Application

Drawing No: PP1-ODOW-DEV-CS-PLN-0024

| Drawing: Overview Sheet | | | Page Size: A1 | | |
|-------------------------|------------|-----------------------|---------------|---------|----------|
| Rev No: | Date | Description | Drawn | Checked | Approved |
| 1.0 | March 2024 | DCO Application Issue | GC | ODOW | ODOW |
| | | | | | |



This document may only be used for the purpose for which it was commissioned and in accordance with the terms of engagement for that commission. Unauthorised use of this document in any form whatsoever is prohibited.

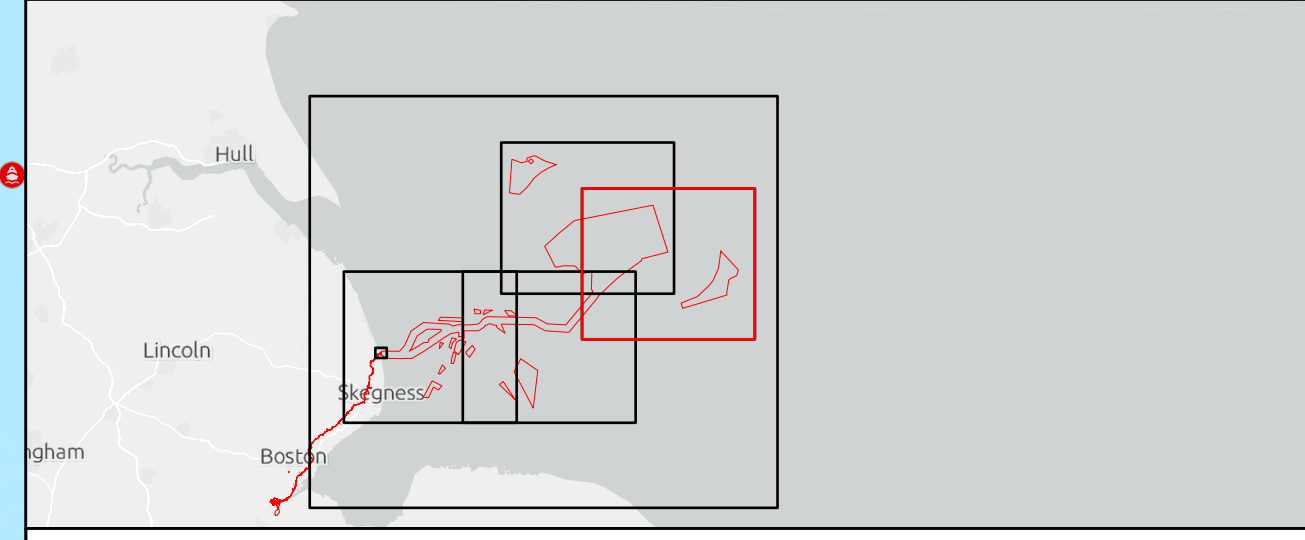
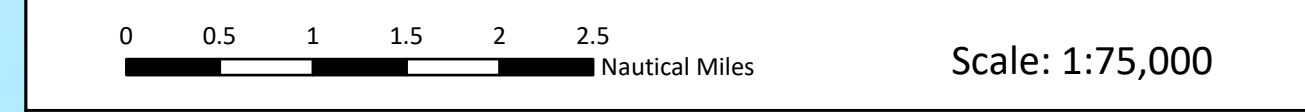


- Legend**
- Order Limits
 - Sheet Extent
- Wrecks & Obstructions (UKHO)**
- Dangerous wreck
 - Foul area/ground
- Archaeological Anomalies - Magnetometer**
- ▲ Medium Potential
 - Low Potential
- MA AEZ**
- Wreck
 - ▲ Obstruction
 - ▲ Foul

Source:
 Contains Esri UK, Esri, TomTom, Garmin, Foursquare, GeoTechnologies, Inc, METI/NASA, USGS, Esri UK, Esri, TomTom, Garmin, FAO, NOAA, USGS. Contains OS data @ Crown Copyright and database right 2022. All rights reserved.

| | |
|--------|------------------------------|
| Notes: | Status: Application issue |
|--------|------------------------------|

Offshore Coordinate System
 Datum: WGS 1984
 Spheroid: WGS 1984
 Projection: UTM Zone 31N
 Central Meridian: 3 E
 Vertical Reference: LAT (Lowest Astronomical Tide)



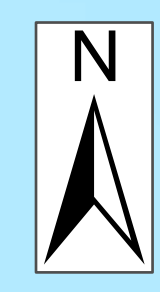
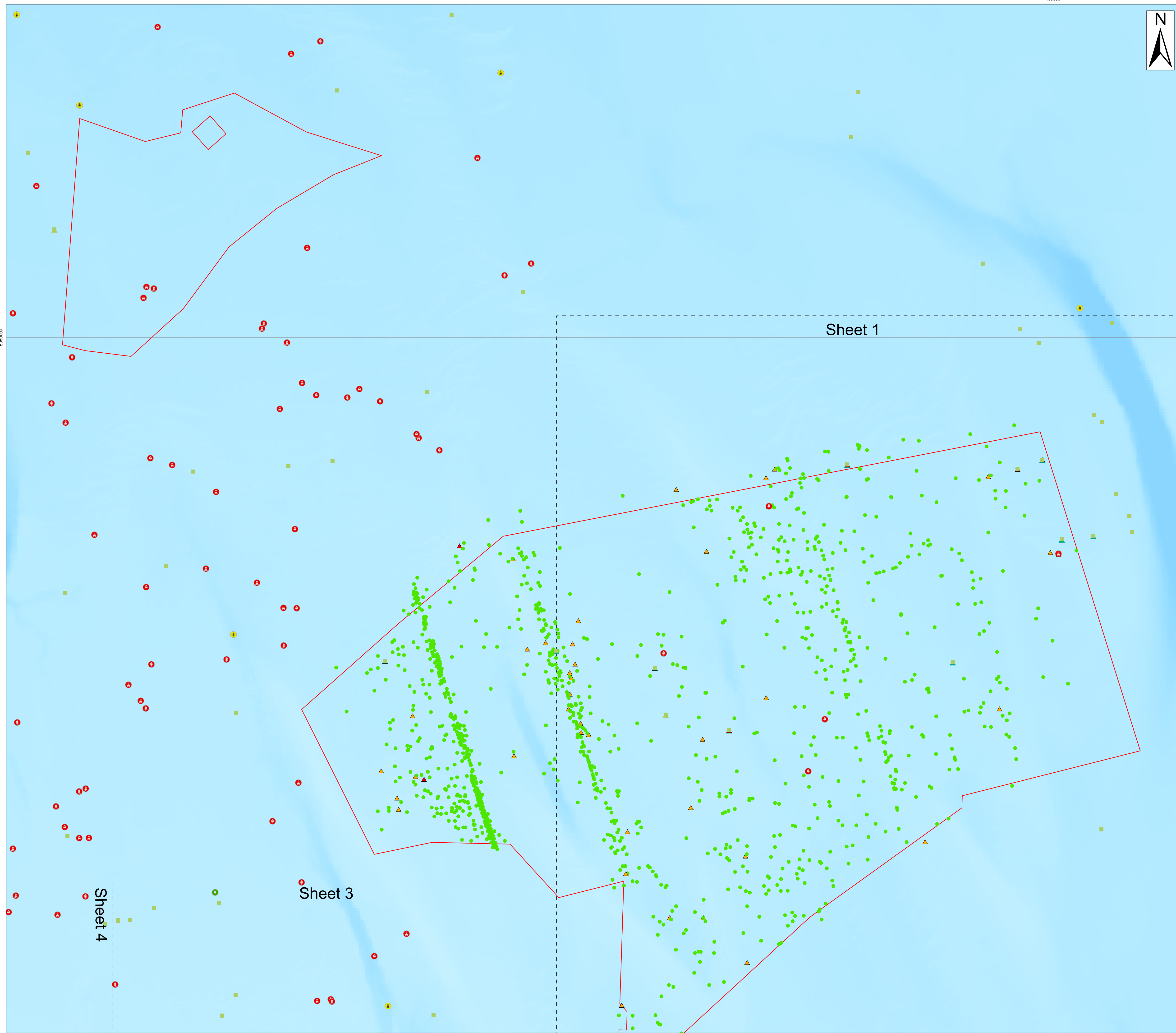
**Outer Dowsing Offshore Wind
 2.14 - Historic Environment Plan Offshore
 DCO Application**

Drawing No: PP1-ODOW-DEV-CS-PLN-0024

| Drawing: 1 of 5 | | | Page Size: A1 | | |
|-----------------|------------|-----------------------|---------------|---------|----------|
| Rev No: | Date | Description | Drawn | Checked | Approved |
| 1.0 | March 2024 | DCO Application Issue | GC | ODOW | ODOW |
| | | | | | |



This document may only be used for the purpose for which it was commissioned and in accordance with the terms of engagement for that commission. Unauthorised use of this document in any form whatsoever is prohibited.

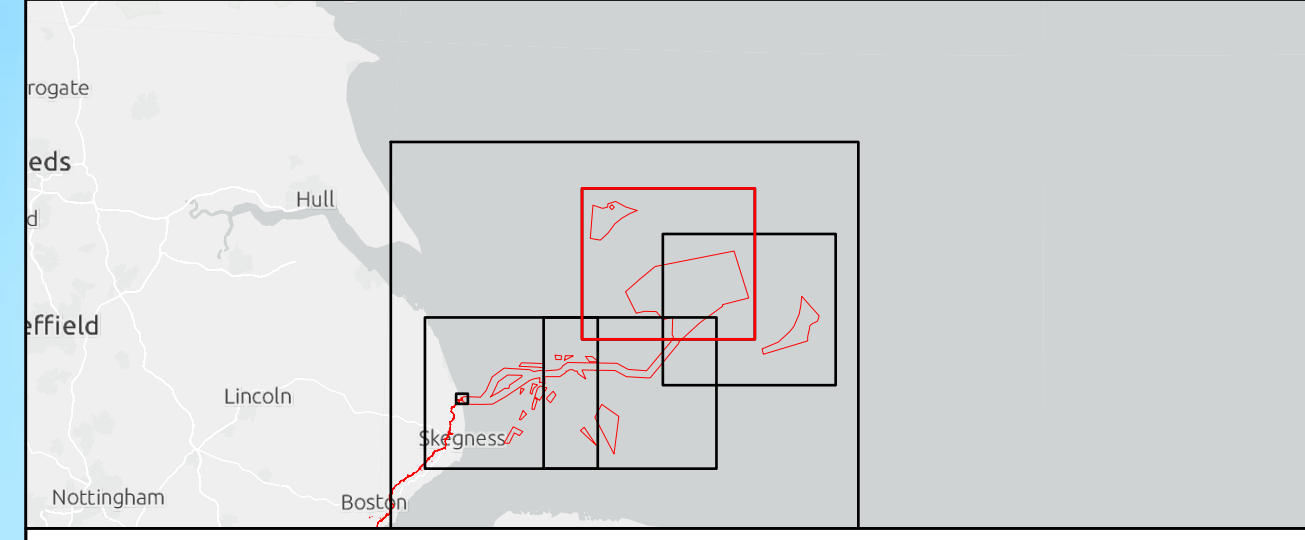
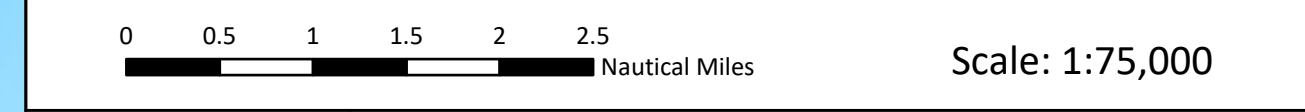


- Legend**
- Order Limits
 - Sheet Extent
- Wrecks & Obstructions (UKHO)**
- Dangerous wreck
 - Non-dangerous wreck
 - Distributed remains of wreck
 - Foul area/ground
- Archaeological Anomalies - Magnetometer**
- ▲ Medium Potential
 - Low Potential
- MA AEZ**
- Wreck
 - ▲ Obstruction
 - ▲ Foul

Source:
 Contains Esri UK, Esri, TomTom, Garmin, Foursquare, GeoTechnologies, Inc, METI/NASA, USGS, Esri UK, Esri, TomTom, Garmin, FAO, NOAA, USGS. Contains OS data @ Crown Copyright and database right 2022. All rights reserved.

| | |
|--------|------------------------------|
| Notes: | Status: Application issue |
|--------|------------------------------|

Offshore Coordinate System
 Datum: WGS 1984
 Spheroid: WGS 1984
 Projection: UTM Zone 31N
 Central Meridian: 3 E
 Vertical Reference: LAT (Lowest Astronomical Tide)



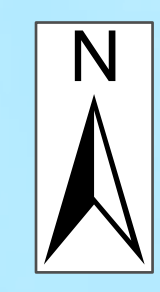
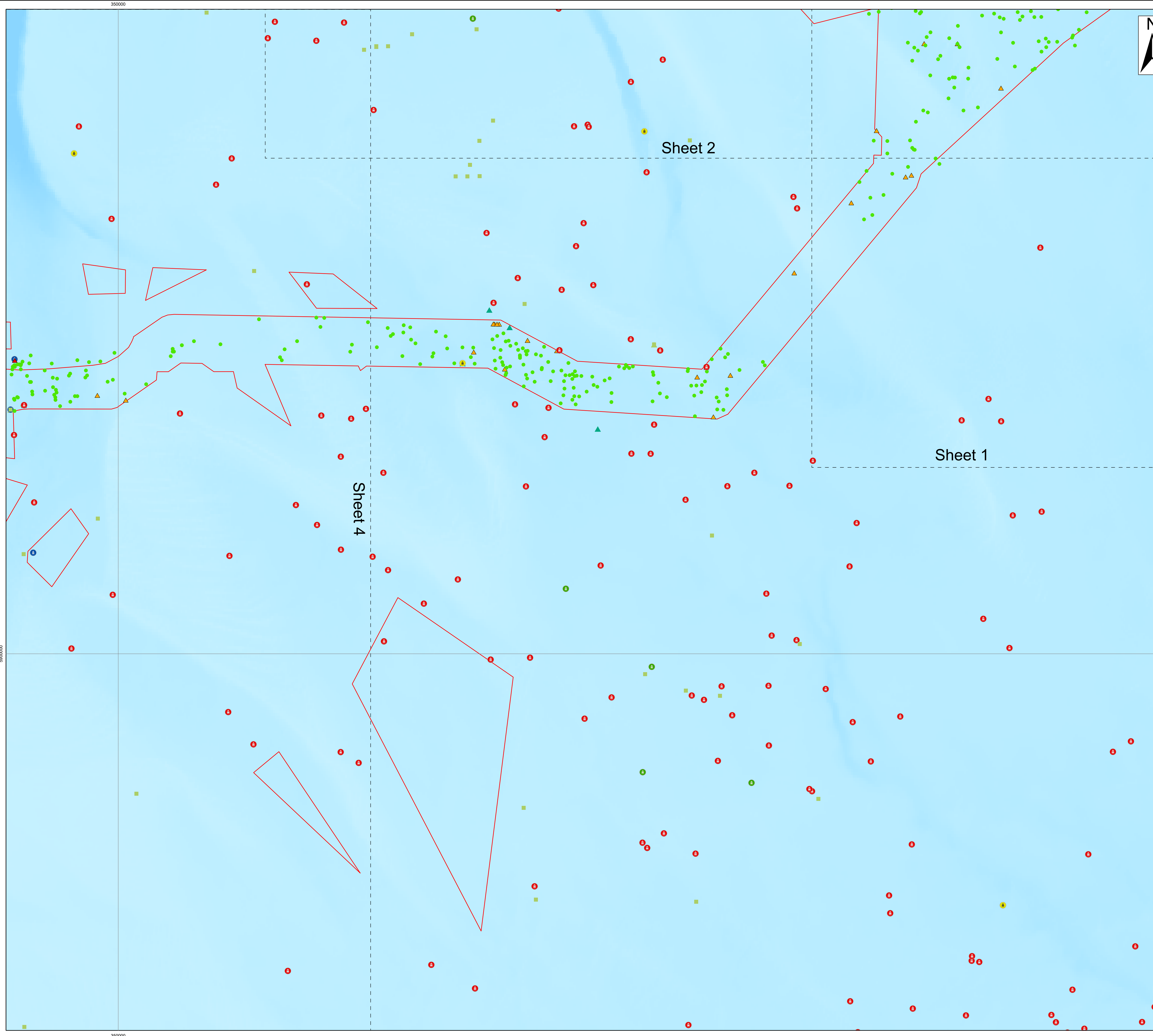
**Outer Dowsing Offshore Wind
 2.14 - Historic Environment Plan Offshore
 DCO Application**

Drawing No: PP1-ODOW-DEV-CS-PLN-0024

| Drawing: 2 of 5 | | | Page Size: A1 | | |
|-----------------|------------|-----------------------|---------------|---------|----------|
| Rev No: | Date | Description | Drawn | Checked | Approved |
| 1.0 | March 2024 | DCO Application Issue | GC | ODOW | ODOW |
| | | | | | |



This document may only be used for the purpose for which it was commissioned and in accordance with the terms of engagement for that commission. Unauthorised use of this document in any form whatsoever is prohibited.

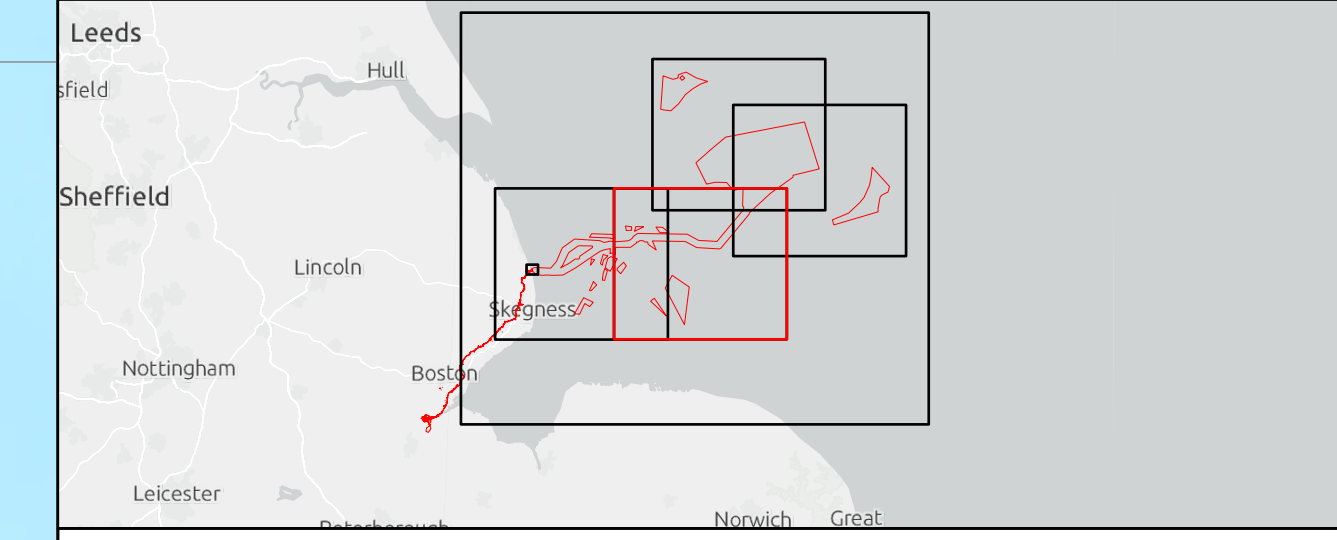
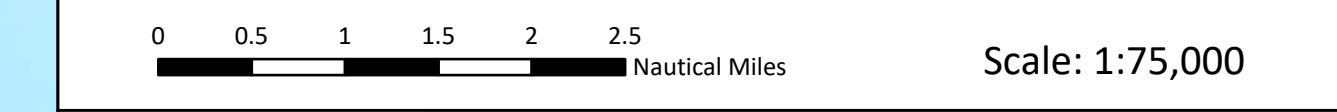


- Legend**
- Order Limits
 - Sheet Extent
- Wrecks & Obstructions (UKHO)**
- Dangerous wreck
 - Non-dangerous wreck
 - Distributed remains of wreck
 - Foul area/ground
- Archaeological Anomalies - Magnetometer**
- ▲ High Potential
 - ▲ Medium Potential
 - ▲ Low Potential
- MA AEZ**
- Wreck
 - ▲ Obstruction
 - ▲ Foul

Source:
 Contains Esri UK, Esri, TomTom, Garmin, Foursquare, GeoTechnologies, Inc, METI/NASA, USGS, Esri UK, Esri, TomTom, Garmin, FAO, NOAA, USGS. Contains OS data @ Crown Copyright and database right 2022. All rights reserved.

| | |
|--------|------------------------------|
| Notes: | Status: Application issue |
|--------|------------------------------|

Offshore Coordinate System
 Datum: WGS 1984
 Spheroid: WGS 1984
 Projection: UTM Zone 31N
 Central Meridian: 3 E
 Vertical Reference: LAT (Lowest Astronomical Tide)



**Outer Dowsing Offshore Wind
 2.14 - Historic Environment Plan Offshore
 DCO Application**

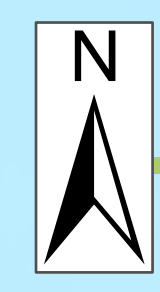
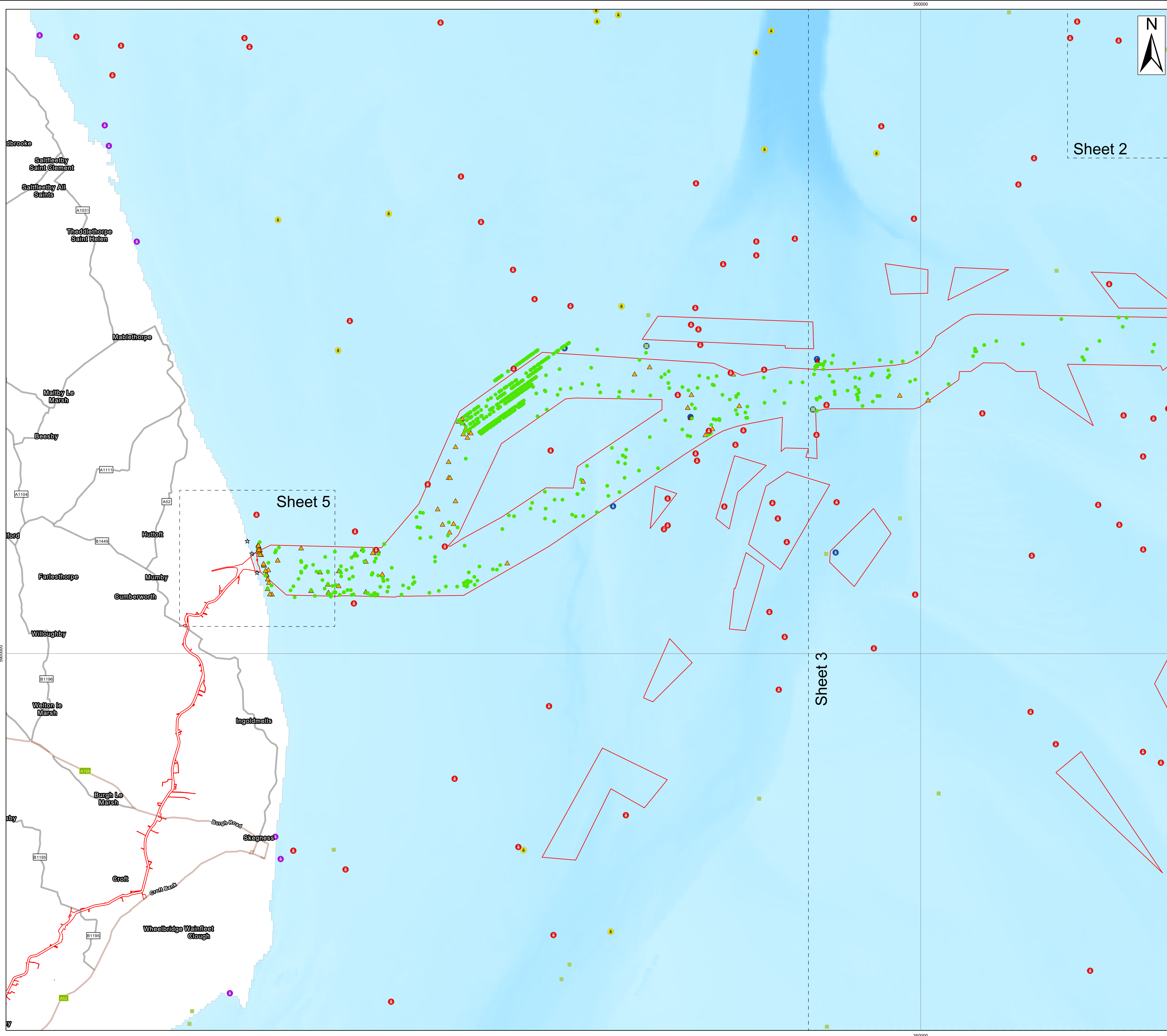
Drawing No: PP1-ODOW-DEV-CS-PLN-0024

Drawing: 3 of 5 Page Size: A1

| Rev No: | Date | Description | Drawn | Checked | Approved |
|---------|------------|-----------------------|-------|---------|----------|
| 1.0 | March 2024 | DCO Application Issue | GC | ODOW | ODOW |
| | | | | | |
| | | | | | |



This document may only be used for the purpose for which it was commissioned and in accordance with the terms of engagement for that commission. Unauthorised use of this document in any form whatsoever is prohibited.

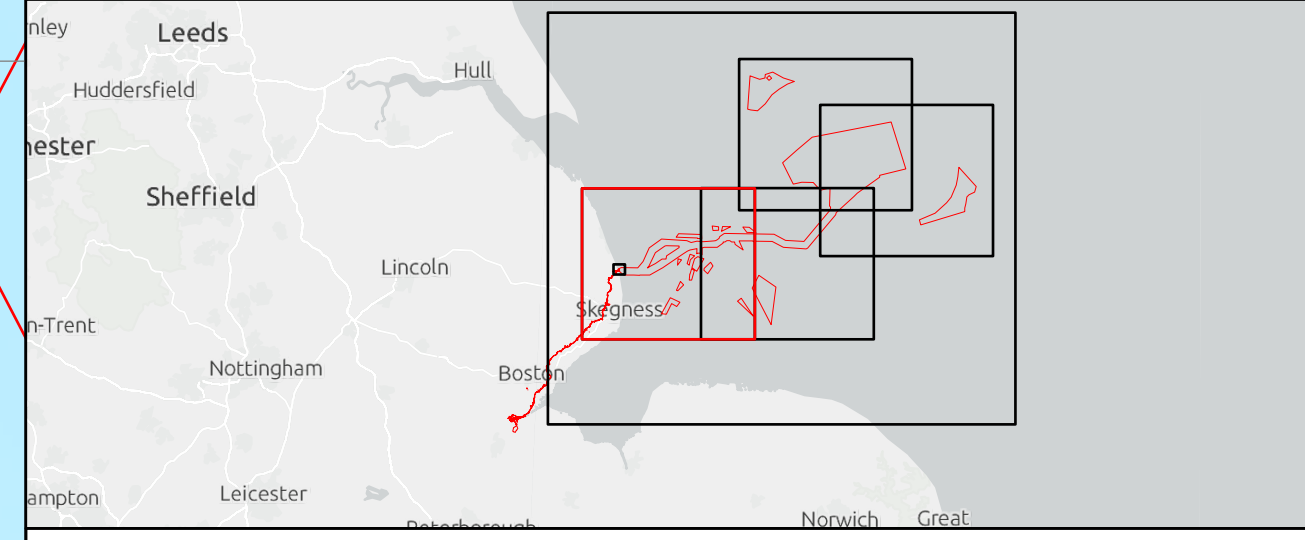
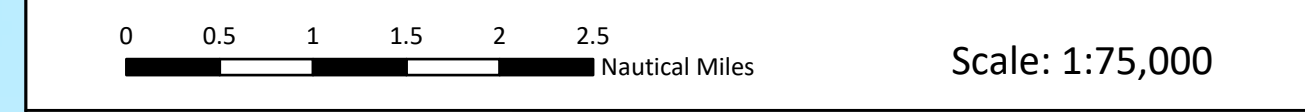


- Legend**
- Order Limits
 - Sheet Extent
- Wrecks & Obstructions (UKHO)**
- Dangerous wreck
 - Non-dangerous wreck
 - Wreck showing any portion of hull or superstructure
 - Foul area/ground
- Archaeological Anomalies - Magnetometer**
- ▲ High Potential
 - ▲ Medium Potential
 - Low Potential
- MA AEZ**
- Wreck
 - ★ Find

Source:
 Contains Esri UK, Esri, TomTom, Garmin, Foursquare, GeoTechnologies, Inc, METI/NASA, USGS, Esri UK, Esri, TomTom, Garmin, FAO, NOAA, USGS. Contains OS data @ Crown Copyright and database right 2022. All rights reserved.

| | |
|--------|------------------------------|
| Notes: | Status: Application issue |
|--------|------------------------------|

Offshore Coordinate System
 Datum: WGS 1984
 Spheroid: WGS 1984
 Projection: UTM Zone 31N
 Central Meridian: 3 E
 Vertical Reference: LAT (Lowest Astronomical Tide)



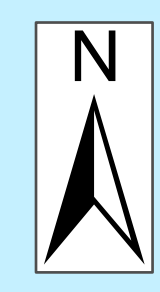
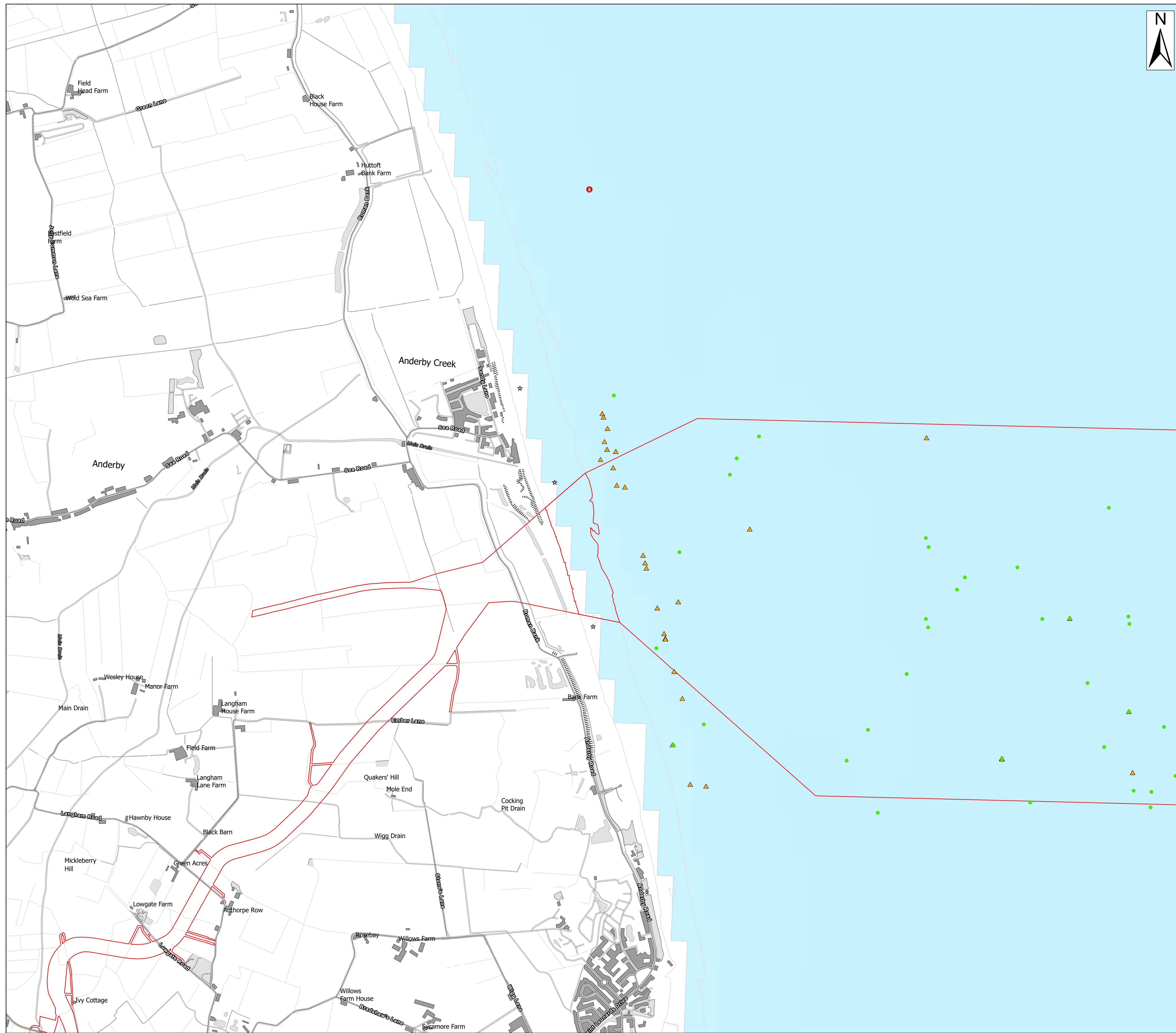
**Outer Dowsing Offshore Wind
 2.14 - Historic Environment Plan Offshore
 DCO Application**

Drawing No: PP1-ODOW-DEV-CS-PLN-0024

| Drawing: 4 of 5 | | | Page Size: A1 | | |
|-----------------|------------|-----------------------|---------------|---------|----------|
| Rev No: | Date | Description | Drawn | Checked | Approved |
| 1.0 | March 2024 | DCO Application Issue | GC | ODOW | ODOW |
| | | | | | |



This document may only be used for the purpose for which it was commissioned and in accordance with the terms of engagement for that commission. Unauthorised use of this document in any form whatsoever is prohibited.

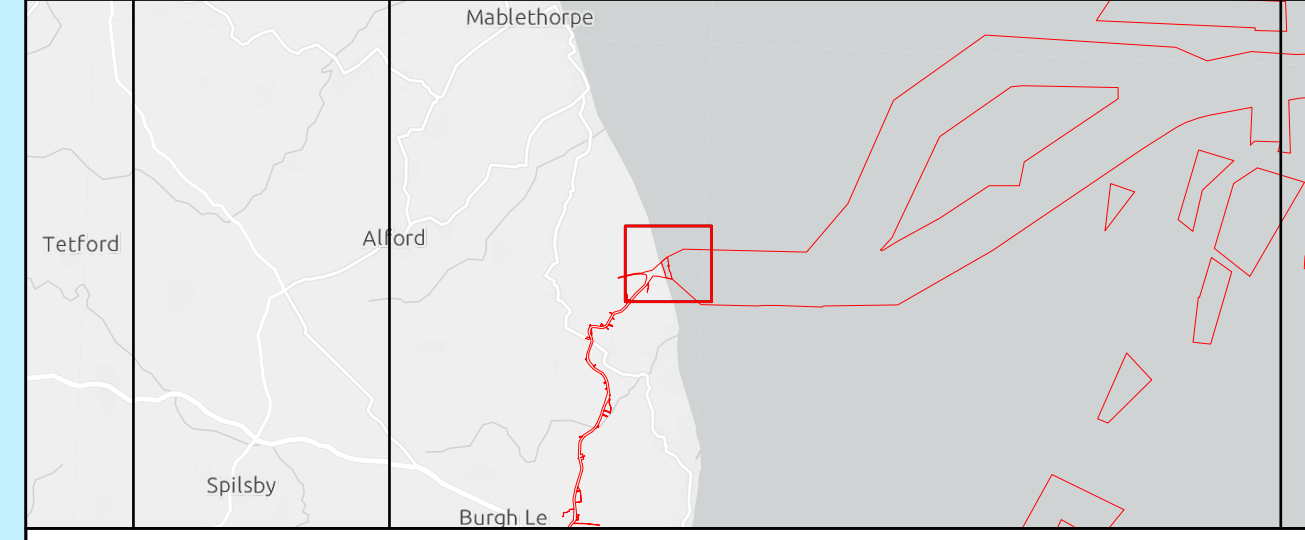
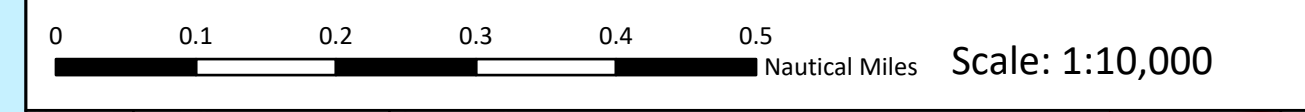


- Legend**
- Order Limits
 - Sheet Extent
- Wrecks & Obstructions (UKHO)**
- Dangerous wreck
- Archaeological Anomalies - Magnetometer**
- ▲ Medium Potential
 - Low Potential
 - ★ Find

Source:
 Contains Esri Community Maps Contributors, Esri UK, Esri, TomTom, Garmin, Foursquare, GeoTechnologies, Inc, METI/NASA, USGS, Esri UK, Esri, TomTom, Garmin, Foursquare, METI/NASA, USGS.
 Contains OS data @ Crown Copyright and database right 2022. All rights reserved.

| | |
|--------|------------------------------|
| Notes: | Status: Application issue |
|--------|------------------------------|

Offshore Coordinate System
 Datum: WGS 1984
 Spheroid: WGS 1984
 Projection: UTM Zone 31N
 Central Meridian: 3 E
 Vertical Reference: LAT (Lowest Astronomical Tide)



**Outer Dowsing Offshore Wind
 2.14 - Historic Environment Plan Offshore
 DCO Application**

Drawing No: PP1-ODOW-DEV-CS-PLN-0024

Drawing: 5 of 5 Page Size: A1

| Rev No: | Date | Description | Drawn | Checked | Approved |
|---------|------------|-----------------------|-------|---------|----------|
| 1.0 | March 2024 | DCO Application Issue | GC | ODOW | ODOW |
| | | | | | |



This document may only be used for the purpose for which it was commissioned and in accordance with the terms of engagement for that commission. Unauthorised use of this document in any form whatsoever is prohibited.